

# MiniBREAK MBI-38M-S

The MiniBREAK single pump packaged tank and booster set has been designed to be compact and provide fluid cat 5 backflow protection via an 'AB' air gap. It complies with the water supply (water fittings) regulations 1999 and comes as a complete package in an enclosed cabinet suitable for wall or floor mounting.

The pump control is provided by a well-proven intuitive controller that will start the pump at falling pressure and stop the pump when flow ceases. The control unit also provides low water protection.

### VOLT-FREE CONTACTS PUMP RUNNING

Both open and closed volt-free contacts are available, which indicate if the pump is running. See the appropriate drawing for volt-free contact wiring configurations.

### PRODUCT OVERVIEW

- Volt-free contact for pump running
- IP65-rated controller
- Lockable enclosure
- Low-water protection device
- Wall or floor mountable
- Single phase

### APPLICATIONS

- Wash down in bin stores
- Dentist's rinsing equipment
- Laboratory water supplies
- Single hosepipe supplies
- Any application where cat 5 protection is required - mortuaries, abattoirs, zoos, healthcare premises, etc.

### DUTYPOINT STANDARD WARRANTY

Your Dutypoint Systems standard product warranty is valid for a period of 24 months from date of despatch. If you need to contact us regarding your warranty or any issues regarding your Dutypoint product, please contact our service department. Call **01452 300590**, email [service@dutypoint.com](mailto:service@dutypoint.com) or visit [dutypoint.com/service](http://dutypoint.com/service).



### RANGE PERFORMANCE

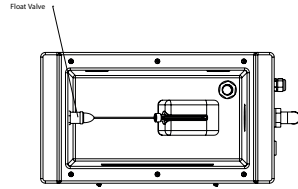
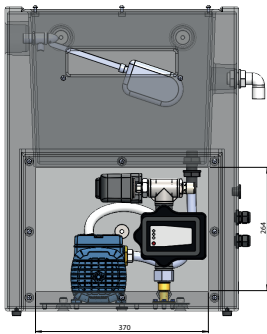
<b>Number of pumps</b>	1
<b>Typical duty</b>	0.2 l/s @ 2.5 bar 0.3 l/s @ 1.8 bar 0.4 l/s @ 1.2 bar
<b>Break tank capacity</b>	23 litres
<b>Power</b>	0.37 kW
<b>Input current</b>	2.5 A
<b>Noise data</b>	Motor at < 70 LpA (dB +/-2)*

\*More specific details available on request.

### MATERIAL SPECIFICATION

<b>Housing</b>	LDPE
<b>Pump body</b>	PPE and brass
<b>Pipework and fittings</b>	Copper, brass, stainless steel
<b>Weight</b>	MBI-38M-S = 20 kg





**RECOMMENDED CLEARANCE FOR ACCESS**

- FRONT: 500mm
- SIDES: 200mm
- TOP: 500mm

**USEABLE TANK VOLUME:**

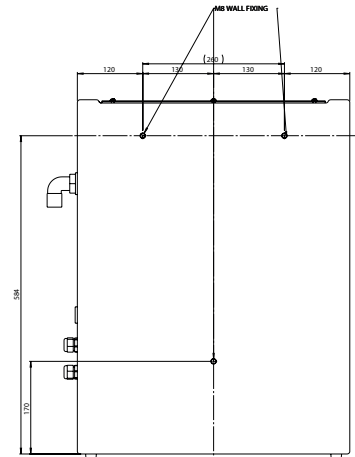
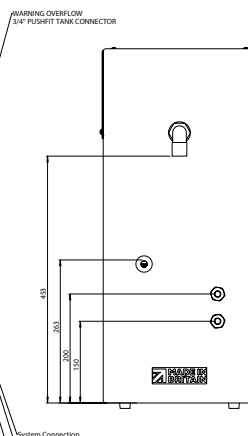
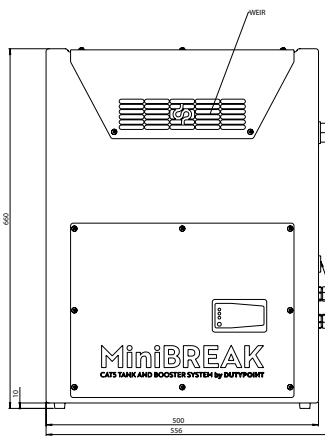
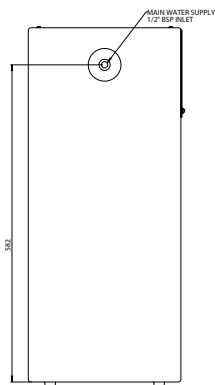
- 12.5L

**WALL MOUNTING INSTRUCTIONS:**

M8 WALL FIXING SCREW BOLTS ALONG WITH PENNY WASHERS TO BE UTILISED FOR SECURE WALL MOUNTING.

THE PRODUCT WEIGHS 45 KG, SO ENSURE THE DRILLED HOLES ARE SUFFICIENTLY DEEP TO WITHSTAND THE PULL-OUT FORCE.

FAILURE TO DO SO MAY LEAD TO IMPROPER INSTALLATION.



**FRONT VIEW**

System Connection  
System Push Fit  
Cable Gland with  
2m of Electrical Cable  
17mm 3 core  
Cable Gland for wiring  
to wall free contact

**SINGLE PUMP CURVES**

